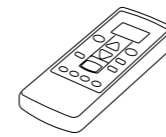
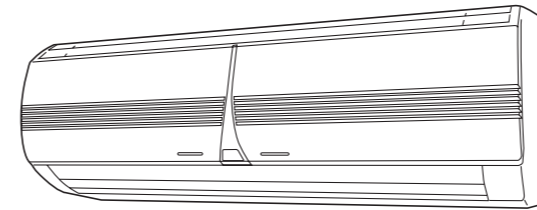


# FUJITSU

OPERATING MANUAL  
 BEDIENUNGSANLEITUNG  
 MODE D'EMPLOI  
 MANUAL DE FUNCIONAMIENTO  
 MANUALE DI ISTRUZIONI  
 ΕΓΧΕΙΡΙΔΙΟ ΛΕΙΤΟΥΡΓΙΑΣ  
 MANUAL DE INSTRUÇÕES  
 РУКОВОДСТВО ПО ЭКСПЛУАТАЦИИ

HEAT & COOL MODEL  
 (REVERSE CYCLE)  
 ROOM AIR CONDITIONER  
 WALL MOUNTED TYPE

Indoor Unit  
**ASY9USBCW**  
**ASY12USBCW**  
 Outdoor Unit  
**AOY9UGBC**  
**AOY12UGBC**



- English
- Deutsch
- Français
- Español
- Italiano
- Ελληνικά
- Português
- Русский

|                                                 |                                                                                                                 |                                                      |
|-------------------------------------------------|-----------------------------------------------------------------------------------------------------------------|------------------------------------------------------|
| TIPO<br>ТИП                                     | MODELO DE AQUECIMENTO E ARREFECIMENTO (CICLO REVERSO)<br>МОДЕЛЬ С РЕЖИМОМ ОХЛАЖДЕНИЯ И ОБОГРЕВА (ОБРАТНЫЙ ЦИКЛ) |                                                      |
| MODELO<br>МОДЕЛЬ                                | UNIDADE INTERNA<br>ВНУТРЕННИЙ ПРИБОР                                                                            | ASY9USBCW                                            |
|                                                 | UNIDADE EXTERNA<br>НАРУЖНЫЙ ПРИБОР                                                                              | AOY9UGBC                                             |
| <b>FICHA TECNICA</b>                            |                                                                                                                 |                                                      |
| ALIMENTAÇÃO                                     | 230 V-50 Hz                                                                                                     | PRESSÃO MÁXIMA                                       |
| ARREFECIMENTO                                   | POTÊNCIA ..... 2,9 kW                                                                                           | ASPIRAÇÃO ..... 1,160 kPa                            |
| POTÊNCIA CONSUMIDA ..... 0,84 kW                | CORRENTE CONSUMIDA ..... 3,7 A                                                                                  | COMPRESSÃO ..... 4,120 kPa                           |
| COEFICIENTE DE EFICIÊNCIA ENERGÉTICA ..... 3,45 |                                                                                                                 | REFRIGERANTE ..... R410A 900 g                       |
| AQUECIMENTO                                     | POTÊNCIA ..... 3,05 kW                                                                                          | DIMENSÕES E PESO (LÍQUIDO)                           |
| POTÊNCIA CONSUMIDA ..... 0,75 kW                | CORRENTE CONSUMIDA ..... 3,3 A                                                                                  | UNIDADE INTERNA                                      |
| CORRENTE MÁX.                                   | Arrefecimento ..... 4,6 A                                                                                       | ALTURA/COMPRIMENTO/PROFUNDIDADE ..... 257/790/205 mm |
| Aquecimento ..... 4,8 A                         |                                                                                                                 | PESO ..... 9,0 kg (NET)                              |
|                                                 |                                                                                                                 | UNIDADE EXTERNA                                      |
|                                                 |                                                                                                                 | ALTURA/COMPRIMENTO/PROFUNDIDADE ..... 535/695/250 mm |
|                                                 |                                                                                                                 | PESO ..... 30 kg (NET)                               |

|                                         |                         |                                            |
|-----------------------------------------|-------------------------|--------------------------------------------|
| <b>ТЕХНИЧЕСКИЕ ХАРАКТЕРИСТИКИ</b>       |                         |                                            |
| ЭЛЕКТРОПИТАНИЕ                          | 230 В-50 Гц             | МАКСИМАЛЬНОЕ ДАВЛЕНИЕ                      |
| ОХЛАЖДЕНИЕ                              | МОЩНОСТЬ ..... 2,9 кВт  | ВСАСЫВАНИЕ ..... 1,160 кПа                 |
| ВХОДНАЯ МОЩНОСТЬ ..... 0,84 кВт         | ЭЛЕКТРОТОК ..... 3,7 А  | ВЫПУСК ..... 4,120 кПа                     |
| КОЭФФИЦИЕНТ ЭНЕРГОСБЕРЕЖЕНИЯ ..... 3,45 |                         | ХЛАДАГЕНТ ..... R410A 900 г                |
| ОБОГРЕВ                                 | МОЩНОСТЬ ..... 3,05 кВт | ГАБАРИТЫ И МАССА                           |
| ВХОДНАЯ МОЩНОСТЬ ..... 0,75 кВт         | ЭЛЕКТРОТОК ..... 3,3 А  | ВНУТРЕННИЙ ПРИБОР                          |
| МАКСИМАЛЬНАЯ СИЛА ТОКА                  | Охлаждение ..... 4,6 А  | Высота/Ширина/Глубина ..... 257/790/205 мм |
| Обогрев ..... 4,8 А                     |                         | Масса ..... 9,0 кг (нетто)                 |
|                                         |                         | НАРУЖНЫЙ ПРИБОР                            |
|                                         |                         | Высота/Ширина/Глубина ..... 535/695/250 мм |
|                                         |                         | Масса ..... 30 кг (нетто)                  |

|                                                 |                                                                                                                 |                                                      |
|-------------------------------------------------|-----------------------------------------------------------------------------------------------------------------|------------------------------------------------------|
| TIPO<br>ТИП                                     | MODELO DE AQUECIMENTO E ARREFECIMENTO (CICLO REVERSO)<br>МОДЕЛЬ С РЕЖИМОМ ОХЛАЖДЕНИЯ И ОБОГРЕВА (ОБРАТНЫЙ ЦИКЛ) |                                                      |
| MODELO<br>МОДЕЛЬ                                | UNIDADE INTERNA<br>ВНУТРЕННИЙ ПРИБОР                                                                            | ASY12USBCW                                           |
|                                                 | UNIDADE EXTERNA<br>НАРУЖНЫЙ ПРИБОР                                                                              | AOY12UGBC                                            |
| <b>FICHA TECNICA</b>                            |                                                                                                                 |                                                      |
| ALIMENTAÇÃO                                     | 230 V-50 Hz                                                                                                     | PRESSÃO MÁXIMA                                       |
| ARREFECIMENTO                                   | POTÊNCIA ..... 3,70 kW                                                                                          | ASPIRAÇÃO ..... 1,160 kPa                            |
| POTÊNCIA CONSUMIDA ..... 1,13 kW                | CORRENTE CONSUMIDA ..... 5,0 A                                                                                  | COMPRESSÃO ..... 4,120 kPa                           |
| COEFICIENTE DE EFICIÊNCIA ENERGÉTICA ..... 3,27 |                                                                                                                 | REFRIGERANTE ..... R410A 970 g                       |
| AQUECIMENTO                                     | POTÊNCIA ..... 4,00 kW                                                                                          | DIMENSÕES E PESO (LÍQUIDO)                           |
| POTÊNCIA CONSUMIDA ..... 1,04 kW                | CORRENTE CONSUMIDA ..... 4,6 A                                                                                  | UNIDADE INTERNA                                      |
| CORRENTE MÁX.                                   | Arrefecimento ..... 6,1 A                                                                                       | ALTURA/COMPRIMENTO/PROFUNDIDADE ..... 257/790/205 mm |
| Aquecimento ..... 6,5 A                         |                                                                                                                 | PESO ..... 9,0 kg (NET)                              |
|                                                 |                                                                                                                 | UNIDADE EXTERNA                                      |
|                                                 |                                                                                                                 | ALTURA/COMPRIMENTO/PROFUNDIDADE ..... 535/780/250 mm |
|                                                 |                                                                                                                 | PESO ..... 35 kg (NET)                               |

|                                         |                         |                                            |
|-----------------------------------------|-------------------------|--------------------------------------------|
| <b>ТЕХНИЧЕСКИЕ ХАРАКТЕРИСТИКИ</b>       |                         |                                            |
| ЭЛЕКТРОПИТАНИЕ                          | 230 В-50 Гц             | МАКСИМАЛЬНОЕ ДАВЛЕНИЕ                      |
| ОХЛАЖДЕНИЕ                              | МОЩНОСТЬ ..... 3,70 кВт | ВСАСЫВАНИЕ ..... 1,160 кПа                 |
| ВХОДНАЯ МОЩНОСТЬ ..... 1,13 кВт         | ЭЛЕКТРОТОК ..... 5,0 А  | ВЫПУСК ..... 4,120 кПа                     |
| КОЭФФИЦИЕНТ ЭНЕРГОСБЕРЕЖЕНИЯ ..... 3,27 |                         | ХЛАДАГЕНТ ..... R410A 970 г                |
| ОБОГРЕВ                                 | МОЩНОСТЬ ..... 4,00 кВт | ГАБАРИТЫ И МАССА                           |
| ВХОДНАЯ МОЩНОСТЬ ..... 1,04 кВт         | ЭЛЕКТРОТОК ..... 4,6 А  | ВНУТРЕННИЙ ПРИБОР                          |
| МАКСИМАЛЬНАЯ СИЛА ТОКА                  | Охлаждение ..... 6,1 А  | Высота/Ширина/Глубина ..... 257/790/205 мм |
| Обогрев ..... 6,5 А                     |                         | Масса ..... 9,0 кг (нетто)                 |
|                                         |                         | НАРУЖНЫЙ ПРИБОР                            |
|                                         |                         | Высота/Ширина/Глубина ..... 535/780/250 мм |
|                                         |                         | Масса ..... 35 кг (нетто)                  |

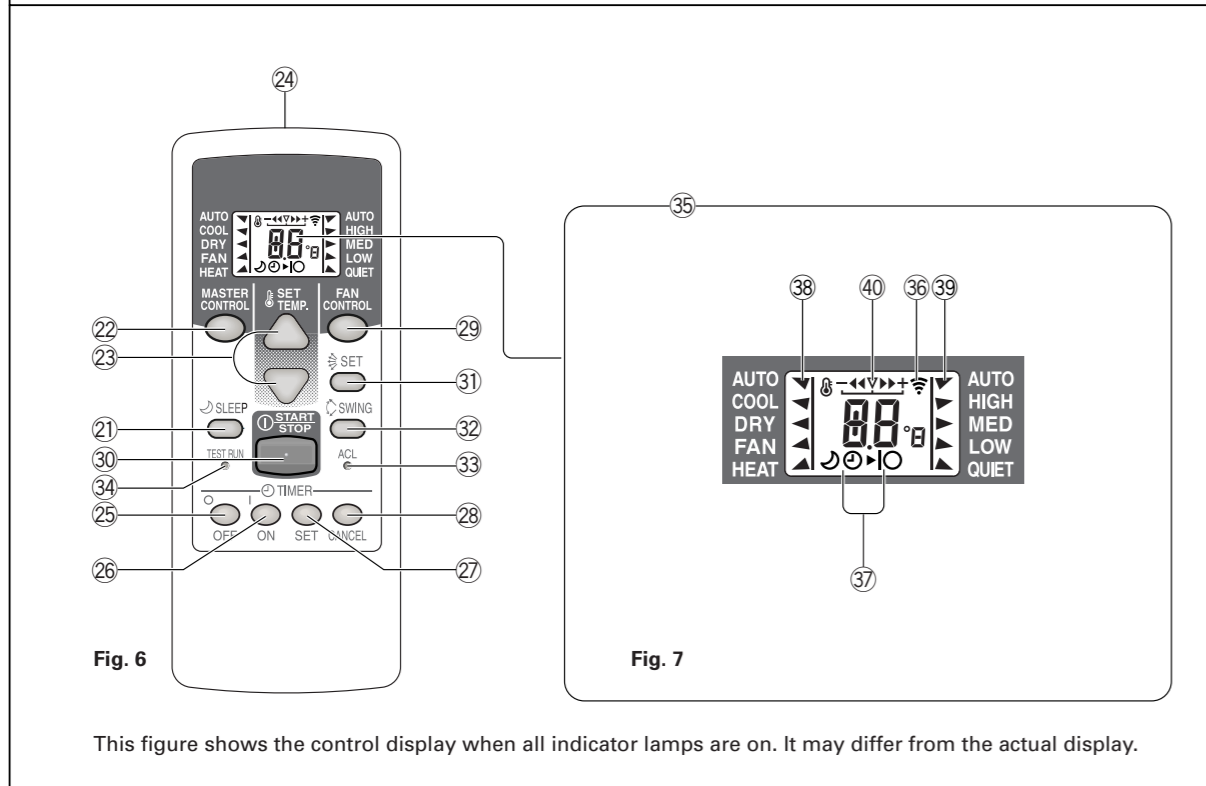
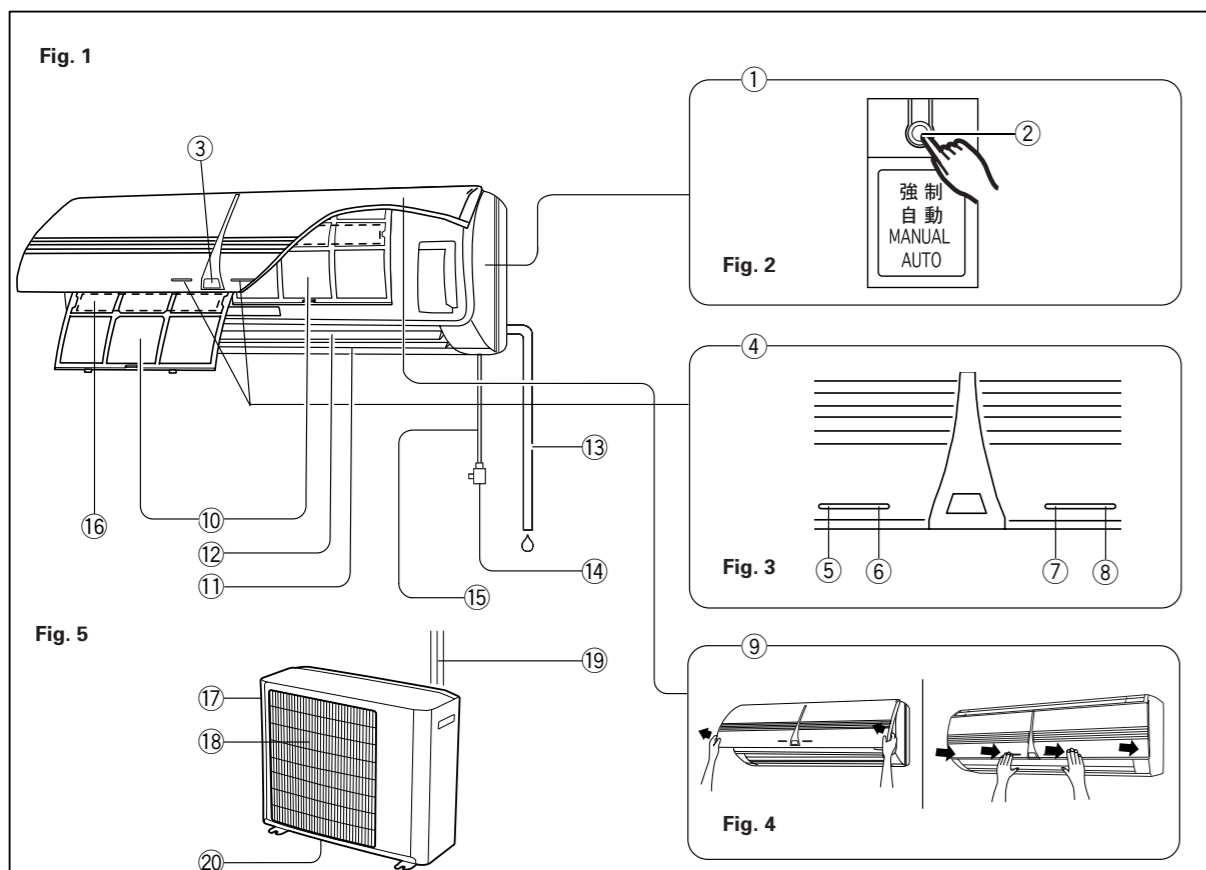
**FUJITSU**  
 FUJITSU GENERAL LIMITED  
 1116, Suenaga, Takatsu-ku, Kawasaki 213-8502, Japan

KEEP THIS OPERATION MANUAL  
 FOR FUTURE REFERENCE

FUJITSU GENERAL LIMITED

EEE Yönetmeliğine Uygundur.

P/N9312364015-04



## CONTENTS

|                              |      |                                                  |       |
|------------------------------|------|--------------------------------------------------|-------|
| SAFETY PRECAUTIONS .....     | En-1 | ADJUSTING THE DIRECTION OF AIR CIRCULATION ..... | En-9  |
| FEATURES AND FUNCTIONS ..... | En-2 | SWING OPERATION .....                            | En-10 |
| NAME OF PARTS .....          | En-3 | MANUAL AUTO OPERATION .....                      | En-10 |
| PREPARATION .....            | En-4 | CLEANING AND CARE .....                          | En-11 |
| OPERATION .....              | En-5 | TROUBLESHOOTING .....                            | En-12 |
| TIMER OPERATION .....        | En-7 | OPERATING TIPS .....                             | En-13 |
| SLEEP TIMER OPERATION .....  | En-8 |                                                  |       |

## SAFETY PRECAUTIONS



- Do not attempt to install this air conditioner by yourself.
- This unit contains no user-serviceable parts. Always consult authorized service personnel for repairs.
- When moving, consult authorized service personnel for disconnection and installation of the unit.
- Do not become excessively chilled by staying for lengthy periods in the direct cooling airflow.
- Do not insert fingers or objects into the outlet port or intake grilles.
- Do not start and stop air conditioner operation by disconnecting the power supply cord and so on.
- Take care not to damage the power supply cord.
- In the event of a malfunction (burning smell, etc.), immediately stop operation, disconnect the power supply plug, and consult authorized service personnel.
- If the power supply cord of this appliance is damaged, it should only be replaced by the authorized service personal, since special purpose tools and specified cord are required.



- Provide occasional ventilation during use.
- Do not direct air flow at fireplaces or heating apparatus.
- Do not climb on, or place objects on, the air conditioner.
- Do not hang objects from the indoor unit.
- Do not set flower vases or water containers on top of air conditioners.
- Do not expose the air conditioner directly to water.
- Do not pull power supply cord.
- Turn off power source when not using the unit for extended periods.
- Check the condition of the installation stand for damage.
- Do not place animals or plants in the direct path of the air flow.
- Do not drink the water drained from the air conditioner.
- Do not use in applications involving the storage of foods, plants or animals, precision equipment, or art works.
- Connection valves become hot during Heating; handle with care.
- Do not apply any heavy pressure to radiator fins.
- Operate only with air filters installed.
- Do not block or cover the intake grille and outlet port.
- Ensure that any electronic equipment is at least one metre away from either the indoor or outdoor units.
- Avoid installing the air conditioner near a fireplace or other heating apparatus.
- When installing the indoor and outdoor unit, take precautions to prevent access to infants.
- Do not use inflammable gases near the air conditioner.

|                                                 |                                                 |                                                            |           |
|-------------------------------------------------|-------------------------------------------------|------------------------------------------------------------|-----------|
| MODEL<br>MODELL<br>MODELE<br>MODELLO<br>MONTEAO | INDOOR UNIT<br>INNENGERÄT<br>UNITE INTÉRIEURE   | UNIDAD INTERIOR<br>APPARECCHIO INTERNO<br>ΕΣΩΤΕΡΙΚΗ ΜΟΝΑΔΑ | ASY9USBCW |
|                                                 | OUTDOOR UNIT<br>AUSSENGERÄT<br>UNITE EXTÉRIEURE | UNIDAD EXTERIOR<br>APPARECCHIO ESTERNO<br>ΕΞΩΤΕΡΙΚΗ ΜΟΝΑΔΑ | AOY9UGBC  |

|                                      |             |                                  |
|--------------------------------------|-------------|----------------------------------|
| <b>ESPECIFICACIONES</b>              |             |                                  |
| ALIMENTACIÓN .....                   | 230 V-50 Hz | <b>PRESIÓN MÁX.</b>              |
| REFRIGERACIÓN                        |             | SUCCIÓN .....                    |
| CAPACIDAD .....                      | 2,9 kW      | DESCARGA .....                   |
| ENTRADA DE ALIMENTACIÓN .....        | 0,84 kW     | REFRIGERANTE .....               |
| CORRIENTE .....                      | 3,7 A       |                                  |
| RAZÓN DE EFICIENCIA DE ENERGÍA ..... | 3,45        | <b>DIMENSIONES Y PESO</b>        |
| CALEFACCIÓN                          |             | UNIDAD INTERIOR                  |
| CAPACIDAD .....                      | 3,05 kW     | Altura/anchura/profundidad ..... |
| ENTRADA DE ALIMENTACIÓN .....        | 0,75 kW     | Peso .....                       |
| CORRIENTE .....                      | 3,3 A       | UNIDAD EXTERIOR                  |
| <b>CORRIENTE MÁX</b>                 |             | Altura/anchura/profundidad ..... |
| Refrigeración .....                  | 4,6 A       | Peso .....                       |
| Calefacción .....                    | 4,8 A       |                                  |

|                                         |             |                                        |
|-----------------------------------------|-------------|----------------------------------------|
| <b>DATI TECNICI</b>                     |             |                                        |
| ALIMENTAZIONE .....                     | 230 V-50 Hz | <b>PRESIONE MASSIMA</b>                |
| RAFFREDDAMENTO                          |             | ASPIRAZIONE .....                      |
| CAPACITÀ .....                          | 2,9 kW      | EMISSIONE .....                        |
| CONSUMO .....                           | 0,84 kW     | REFRIGERANTE .....                     |
| CORRENTE .....                          | 3,7 A       |                                        |
| RAPPORTO ENERGETICO DI EFFICIENZA ..... | 3,45        | <b>DIMENSIONI E PESO</b>               |
| RISCALDAMENTO                           |             | APPARECCHIO INTERNO                    |
| CAPACITÀ .....                          | 3,05 kW     | Altezza x Larghezza x Profondità ..... |
| CONSUMO .....                           | 0,75 kW     | Peso .....                             |
| CORRENTE .....                          | 3,3 A       | APPARECCHIO ESTERNO                    |
| <b>CORRENTE MASSIMA</b>                 |             | Altezza x Larghezza x Profondità ..... |
| Raffreddamento .....                    | 4,6 A       | Peso .....                             |
| Riscaldamento .....                     | 4,8 A       |                                        |

|                                       |             |                             |
|---------------------------------------|-------------|-----------------------------|
| <b>ΧΑΡΑΚΤΗΡΙΣΤΙΚΑ</b>                 |             |                             |
| ΤΡΟΦΟΔΟΣΙΑ .....                      | 230 V-50 Hz | <b>ΜΕΓΙΣΤΗ ΠΙΕΣΗ</b>        |
| ΨΥΞΗ                                  |             | ΑΝΑΡΡΟΦΙΣΗ .....            |
| ΔΥΝΑΤΟΤΗΤΑ .....                      | 2,9 kW      | ΕΚΤΟΝΩΣΗ .....              |
| ΙΣΧΥΣ ΕΙΣΟΔΟΥ .....                   | 0,84 kW     | ΨΥΚΤΙΚΟ .....               |
| ΡΕΥΜΑ .....                           | 3,7 A       |                             |
| ΣΥΝΤΕΛΕΣΤΗΣ ΑΠΟΔΟΣΕΩΣ ΕΝΕΡΓΕΙΑΣ ..... | 3,45        | <b>ΔΙΑΣΤΑΣΕΙΣ ΚΑΙ ΒΑΡΟΣ</b> |
| ΘΕΡΜΑΝΣΗ                              |             | ΕΣΩΤΕΡΙΚΗ ΜΟΝΑΔΑ            |
| ΔΥΝΑΤΟΤΗΤΑ .....                      | 3,05 kW     | ΥΨΟΣ/ΠΛΑΤΟΣ/ΒΑΘΟΣ .....     |
| ΙΣΧΥΣ ΕΙΣΟΔΟΥ .....                   | 0,75 kW     | ΒΑΡΟΣ .....                 |
| ΡΕΥΜΑ .....                           | 3,3 A       | ΕΞΩΤΕΡΙΚΗ ΜΟΝΑΔΑ            |
| <b>Μέγιστη Χωρητικότητα</b>           |             | ΥΨΟΣ/ΠΛΑΤΟΣ/ΒΑΘΟΣ .....     |
| Ψύξη .....                            | 4,6 A       | ΒΑΡΟΣ .....                 |
| Θέρμανση .....                        | 4,8 A       |                             |

|                                                 |                                                 |                                                            |            |
|-------------------------------------------------|-------------------------------------------------|------------------------------------------------------------|------------|
| MODEL<br>MODELL<br>MODELE<br>MODELLO<br>MONTEAO | INDOOR UNIT<br>INNENGERÄT<br>UNITE INTÉRIEURE   | UNIDAD INTERIOR<br>APPARECCHIO INTERNO<br>ΕΣΩΤΕΡΙΚΗ ΜΟΝΑΔΑ | ASY12USBCW |
|                                                 | OUTDOOR UNIT<br>AUSSENGERÄT<br>UNITE EXTÉRIEURE | UNIDAD EXTERIOR<br>APPARECCHIO ESTERNO<br>ΕΞΩΤΕΡΙΚΗ ΜΟΝΑΔΑ | AOY12UGBC  |

|                                      |             |                                  |
|--------------------------------------|-------------|----------------------------------|
| <b>ESPECIFICACIONES</b>              |             |                                  |
| ALIMENTACIÓN .....                   | 230 V-50 Hz | <b>PRESIÓN MÁX.</b>              |
| REFRIGERACIÓN                        |             | SUCCIÓN .....                    |
| CAPACIDAD .....                      | 3,70 kW     | DESCARGA .....                   |
| ENTRADA DE ALIMENTACIÓN .....        | 1,13 kW     | REFRIGERANTE .....               |
| CORRIENTE .....                      | 5,0 A       |                                  |
| RAZÓN DE EFICIENCIA DE ENERGÍA ..... | 3,27        | <b>DIMENSIONES Y PESO</b>        |
| CALEFACCIÓN                          |             | UNIDAD INTERIOR                  |
| CAPACIDAD .....                      | 4,00 kW     | Altura/Anchura/Profundidad ..... |
| ENTRADA DE ALIMENTACIÓN .....        | 1,04 kW     | Peso .....                       |
| CORRIENTE .....                      | 4,6 A       | UNIDAD EXTERIOR                  |
| <b>CORRIENTE MÁX</b>                 |             | Altura/Anchura/Profundidad ..... |
| Refrigeración .....                  | 6,1 A       | Peso .....                       |
| Calefacción .....                    | 6,5 A       |                                  |

|                                         |             |                                        |
|-----------------------------------------|-------------|----------------------------------------|
| <b>DATI TECNICI</b>                     |             |                                        |
| ALIMENTAZIONE .....                     | 230 V-50 Hz | <b>PRESIONE MASSIMA</b>                |
| RAFFREDDAMENTO                          |             | ASPIRAZIONE .....                      |
| CAPACITÀ .....                          | 3,70 kW     | EMISSIONE .....                        |
| CONSUMO .....                           | 1,13 kW     | REFRIGERANTE .....                     |
| CORRENTE .....                          | 5,0 A       |                                        |
| RAPPORTO ENERGETICO DI EFFICIENZA ..... | 3,27        | <b>DIMENSIONI E PESO</b>               |
| RISCALDAMENTO                           |             | APPARECCHIO INTERNO                    |
| CAPACITÀ .....                          | 4,00 kW     | Altezza x Larghezza x Profondità ..... |
| CONSUMO .....                           | 1,04 kW     | Peso .....                             |
| CORRENTE .....                          | 4,6 A       | APPARECCHIO ESTERNO                    |
| <b>CORRENTE MASSIMA</b>                 |             | Altezza x Larghezza x Profondità ..... |
| Raffreddamento .....                    | 6,1 A       | Peso .....                             |
| Riscaldamento .....                     | 6,5 A       |                                        |

|                                       |             |                             |
|---------------------------------------|-------------|-----------------------------|
| <b>ΧΑΡΑΚΤΗΡΙΣΤΙΚΑ</b>                 |             |                             |
| ΤΡΟΦΟΔΟΣΙΑ .....                      | 230 V-50 Hz | <b>ΜΕΓΙΣΤΗ ΠΙΕΣΗ</b>        |
| ΨΥΞΗ                                  |             | ΑΝΑΡΡΟΦΙΣΗ .....            |
| ΔΥΝΑΤΟΤΗΤΑ .....                      | 3,70 kW     | ΕΚΤΟΝΩΣΗ .....              |
| ΙΣΧΥΣ ΕΙΣΟΔΟΥ .....                   | 1,13 kW     | ΨΥΚΤΙΚΟ .....               |
| ΡΕΥΜΑ .....                           | 5,0 A       |                             |
| ΣΥΝΤΕΛΕΣΤΗΣ ΑΠΟΔΟΣΕΩΣ ΕΝΕΡΓΕΙΑΣ ..... | 3,27        | <b>ΔΙΑΣΤΑΣΕΙΣ ΚΑΙ ΒΑΡΟΣ</b> |
| ΘΕΡΜΑΝΣΗ                              |             | ΕΣΩΤΕΡΙΚΗ ΜΟΝΑΔΑ            |
| ΔΥΝΑΤΟΤΗΤΑ .....                      | 4,00 kW     | ΥΨΟΣ/ΠΛΑΤΟΣ/ΒΑΘΟΣ .....     |
| ΙΣΧΥΣ ΕΙΣΟΔΟΥ .....                   | 1,04 kW     | ΒΑΡΟΣ .....                 |
| ΡΕΥΜΑ .....                           | 4,6 A       | ΕΞΩΤΕΡΙΚΗ ΜΟΝΑΔΑ            |
| <b>Μέγιστη Χωρητικότητα</b>           |             | ΥΨΟΣ/ΠΛΑΤΟΣ/ΒΑΘΟΣ .....     |
| Ψύξη .....                            | 6,1 A       | ΒΑΡΟΣ .....                 |
| Θέρμανση .....                        | 6,5 A       |                             |



## FEATURES AND FUNCTIONS

---

### AUTO CHANGEOVER

The operation mode (cooling, heating) is switched automatically to maintain the set temperature, and the temperature is kept constant at all times.

### SLEEP TIMER

When the SLEEP button is pressed during Heating mode, the air conditioner's thermostat setting is gradually lowered during the period of operation; during cooling mode, the thermostat setting is gradually raised during the period of operation. When the set time is reached, the unit automatically turns off.

### WIRELESS REMOTE CONTROLLER

The Wireless Remote Controller allows convenient control of air conditioner operation.

### SWING OPERATION

The Air Flow Direction Louvers swings automatically up and down so that the air speeds to every nook and corner of your room.

### REMOVABLE INTAKE GRILLE

The indoor unit's Intake Grille can be removed for easy cleaning and maintenance.

### MILDEW-RESISTANT FILTER


The AIR FILTER has been treated to resist mildew growth, thus allowing cleaner use and easier care.

### SUPER QUIET OPERATION

When the FAN CONTROL button is used to select QUIET, the unit begins super-quiet operation; the indoor unit's air-flow is reduced to produce quieter operation.

### AIR CLEANING FILTER (Optional)

The optional Air Cleaning Filter (Model APS-03D) uses an electrostatic principle to clean the air of fine particulate matter such as tobacco smoke and plant pollen.



# NAME OF PARTS

**Fig. 1 Indoor Unit**

- ① Operating Control Panel (Fig. 2)
- ② MANUAL AUTO button
- ③ Remote Control Signal Receiver
- ④ Indicator Lamps (Fig. 3)
  - ⑤ OPERATION Indicator Lamp (red)
  - ⑥ TIMER Indicator Lamp (green)
    - If the TIMER indicator lamp flashes when the timer is operating, it indicates that a fault has occurred with the timer setting (See Page 13 Auto Restart).
  - ⑦ SUPER QUIET Indicator Lamp (green)
  - ⑧ SWING Indicator Lamp (orange)
- ⑨ Intake Grille (Fig. 4)
- ⑩ Air Filter
- ⑪ Air Flow Direction Louver
- ⑫ Right-Left Louver  
(behind Air Flow Direction Louver)
- ⑬ Drain Hose
- ⑭ Power Supply Plug
- ⑮ Power Supply Cord
- ⑯ Air Cleaning Filter (optional)

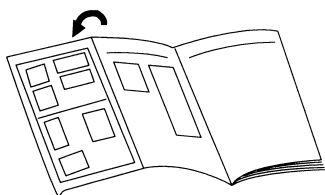
**Fig. 5 Outdoor Unit**

- ⑰ Intake Port
- ⑱ Outlet Port
- ⑲ Pipe Unit
- ⑳ Drain port (bottom)

**Fig. 6 Remote Controller**

- ㉑ SLEEP button
- ㉒ MASTER CONTROL button
- ㉓ SET TEMP. button ( △ / ▽ )
- ㉔ Signal Transmitter
- ㉕ OFF TIMER button
- ㉖ ON TIMER button
- ㉗ SET TIMER button
- ㉘ CANCEL TIMER button
- ㉙ FAN CONTROL button
- ㉚ START/STOP button
- ㉛ AIR FLOW DIRECTION button
- ㉜ SWING LOUVER button
- ㉝ ACL button  
(located inside battery compartment)
- ㉞ TEST RUN button
  - This button is used when installing the conditioner, and should not be used under normal conditions, as it will cause the air conditioner's thermostat function to operate incorrectly.
  - If this button is pressed during normal operation, the unit will switch to test operation mode, and the Indoor Unit's OPERATION Indicator Lamp and TIMER Indicator Lamp will begin to flash simultaneously.
  - To stop the test operation mode, press the START/STOP button to stop the air conditioner.
- ㉟ Remote Controller Display (Fig. 7)
  - ㊱ Transmit Indicator
  - ㊲ Operating Mode Display
  - ㊳ Timer Mode Display
    - OFF TIMER Mark: ○
    - ON TIMER Mark: |
    - SLEEP TIMER Mark: ↻
  - ㊴ Fan Speed Display
  - ㊵ Temperature and time display
    - It displays the temperature setting. However, when making the Timer setting, it will display the Timer time. (The temperature setting will reappear after finishing the timer setting)

● Refer to the folded out page on the cover.



## PREPARATION

### Turn on the Power

- 1 Connect the Power Supply Plug (Fig. 1 ⑭) to an electrical outlet; in the case of a direct line connection, turn on the circuit breaker.**

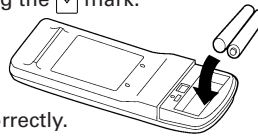
### Load Batteries (R03/LR03 × 2)

- 1 Press and slide the battery compartment lid on the reverse side to open it.**

Slide in the direction of the arrow while pressing the ▼ mark.

- 2 Insert batteries.**

Be sure to align the battery polarities (⊕/⊖) correctly.



- 3 Close the battery compartment lid.**

### ⚠ CAUTION!

- Take care to prevent infants from accidentally swallowing batteries.
- When not using the Remote Controller for an extended period, remove the batteries to avoid possible leakage and damage to the unit.
- If leaking battery fluid comes in contact with your skin, eyes, or mouth, immediately wash with copious amounts of water, and consult your physician.
- Dead batteries should be removed immediately and disposed of properly, either in a battery collection receptacle or to the appropriate authority.
- Do not attempt to recharge dry batteries.

Never mix new and used batteries, or batteries of different types. Batteries should last about one year under normal use. If the Remote Controller's operating range becomes appreciably reduced, replace the batteries and press the ACL button with the tip of a ballpoint pen or other small object.

### To Use the Remote Controller

- The Remote Controller must be pointed at signal receiver (Fig. 1 ③) to operate correctly.
- Operating Range: About 7 meters.
- When a signal is properly received by the air conditioner, a beeping sound will be heard.
- If no beep is heard, press the Remote Controller button again.

# OPERATION

## To Select Mode Operation

- 1 Press the START/STOP button (Fig.6 ㉓).**  
The indoor unit's OPERATION indicator lamp (red) (Fig. 3 ㉔) will light.  
The air conditioner will start operating.
- 2 Press the MASTER CONTROL button (Fig.6 ㉒) to select the desired mode.**  
Each time the button is pressed, the mode will change in the following order.



About three seconds later, the entire display will reappear.

## To Set the Thermostat

Press the SET TEMP. button (Fig. 6 ㉑).

- △ button: Press to raise the thermostat setting.
- ▽ button: Press to lower the thermostat setting.

### ● Thermostat setting range:

|                   |          |
|-------------------|----------|
| AUTO .....        | 18-30 °C |
| Heating .....     | 16-30 °C |
| Cooling/Dry ..... | 18-30 °C |

The thermostat cannot be used to set room temperature during the FAN mode (the temperature will not appear on the Remote Controller's display).

About three seconds later, the entire display will reappear.

The thermostat setting should be considered a standard value, and may differ somewhat from the actual room temperature.

## To Set the Fan Speed

Press the FAN CONTROL button (Fig. 6 ㉒).

Each time the button is pressed, the fan speed changes in the following order:



About three seconds later, the entire display will reappear.

### When set to AUTO:

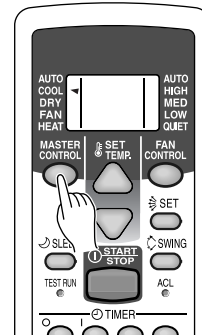
- Heating :** Fan operates so as to optimally circulate warmed air.  
However, the fan will operate at very low speed when the temperature of the air issued from the indoor unit is low.
- Cooling :** As the room temperature approaches that of the thermostat setting, the fan speed becomes slower.
- Fan :** The fan alternately turns on and off; when on, the fan runs at the low fan speed.

The fan will operate at a very low setting during Monitor operation and at the start of the Heating mode.

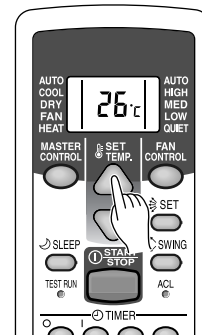
### When set to QUIET:

SUPER QUIET Indicator Lamp (Fig. 3 ㉗) will light.  
SUPER QUIET operation begins. The indoor unit's airflow will be reduced for quieter operation.

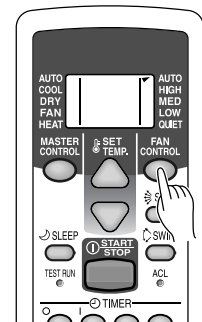
- SUPER QUIET operation cannot be used during Dry mode.
- During Super Quiet operation, Heating and Cooling performance will be reduced somewhat.



Example: When set to COOL.



Example: When set to 26 °C.



Example: When set to AUTO.



## To Stop Operation

### Press the **START/STOP** button.

The OPERATION indicator lamp (red) (Fig. 3 ⑤) will go out.

## About AUTO CHANGEOVER Operation

**AUTO:** ● When AUTO CHANGEOVER operation first selected, the fan will operate at very low speed for about one minute, during which time the unit detects the room conditions and selects the proper operating mode.

If the difference between thermostat setting and actual room temperature is more than +2 °C → Cooling

If the difference between thermostat setting and actual room temperature is within ±2 °C → Monitor operation

If the difference between thermostat setting and actual room temperature is more than -2 °C → Heating operation

- When the air conditioner has adjusted your room's temperature to near the thermostat setting, it will begin monitor operation. In the monitor operation mode, the fan will operate at low speed. If the room temperature subsequently changes, the air conditioner will once again select the appropriate operation (Heating, Cooling) to adjust the temperature to the value set in the thermostat.  
(The monitor operation range is ±2 °C relative to the thermostat setting.)
- If the mode automatically selected by the unit is not what you wish, select one of the mode operation (HEAT, COOL, DRY, FAN).

## About Mode Operation

**Heating:** ● Use to warm your room.

- When Heating mode is selected, the air conditioner will operate at very low fan speed for about 3 to 5 minutes, after which it will switch to the selected fan setting. This period of time is provided to allow the indoor unit to warm up before begin full operation.
- When the room temperature is very low, frost may form on the outside unit, and its performance may be reduced. In order to remove such frost, the unit will automatically enter the defrost cycle from time to time. During Automatic Defrosting operation, the OPERATION indicator lamp (red) will flash, and the heat operation will be interrupted.

**Cooling:** ● Use to cool your room.

**Dry:** ● Use for gently cooling while dehumidifying your room.

- You cannot heat the room during Dry mode.
- During Dry mode, the unit will operate at low speed; in order to adjust room humidity, the indoor unit's fan may stop from time to time. Also, the fan may operate at very low speed when adjusting room humidity.
- The fan speed cannot be changed manually when Dry mode has been selected.

**Fan:** ● Use to circulate the air throughout your room.

### During Heating mode:

Set the thermostat to a temperature setting that is higher than the current room temperature. The Heating mode will not operate if the thermostat is set lower than the actual room temperature.

### During Cooling/Dry mode:

Set the thermostat to a temperature setting that is lower than the current room temperature. The Cooling and Dry modes will not operate if the thermostat is set higher than the actual room temperature (in Cooling mode, the fan alone will operate).

### During Fan mode:

You can not use the unit to heat and cool your room.

# TIMER OPERATION

## To Use the OFF TIMER

- 1 Press the START/STOP button (Fig. 6 30) (if the unit is already operating, proceed to step 2).**  
The Indoor Unit's OPERATION Indicator Lamp (red) (Fig. 3 5) will light.

- 2 Press OFF TIMER button (Fig. 6 25) to select the desired times.**

Press OFF TIMER button to change from temperature setting to timer display.

Each time the button is pressed, the time changes in the following order:

→ 0.5 → 1.0 → 1.5 → 2.0 → 9.0 → 9.5 → 10 → 11 → 12 (hour) ←

Set the time while the OFF TIMER mark (⊕▶○) on the Remote Controller's display is flashing. (The flashing will continue for about 30 seconds)

- 3 Press SET button (Fig. 6 27) to select OFF TIMER operation.**

The OFF Timer Mark (⊕▶○) will be shown on the Remote Controller's display.

The Indoor Unit TIMER Indicator Lamp (green) will light.  
It can not be used during ON TIMER operation.

## To Use the ON TIMER

- 1 Press the START/STOP button (Fig. 6 30) (if the unit is already operating, proceed to step 2).**  
The Indoor Unit's OPERATION Indicator Lamp (red) (Fig. 3 5) will light.

- 2 Press ON TIMER button (Fig. 6 26) to set the expected time.**

If ON TIMER button is pressed, it will be changed into time display from temperature setting display.

Each time the button is pressed, the time time changes in the following order:

→ 6.0 → 6.5 → 7.0 → ... → 9.0 → 9.5 → 10 → 11  
← 5.5 ← 5.0 ← ... ← 1.0 ← 0.5 ← 12(hour) ←

Set the time while the ONTIMER mark (⊕▶|) on the Remote Controller's display is flashing. (The flashing will continue for about 30 seconds)

- 3 Press SET button (Fig. 6 27) to select ON TIMER operation.**

The ON Timer mark (⊕▶|) will be shown on the Remote Controller's display.

The Indoor Unit Timer Indicator Lamp (green) Will light.  
It can not be used during OFF TIMER operation.

### To Cancel the Timer

Press the CANCEL TIMER button.

### To Change the Timer Settings

Press the ON TIMER button/OFF TIMER button as required. Perform Use TIMER step 2 and 3.

### To Stop Air Conditioner Operation while the Timer is Operating

Press the START/STOP button.

### To Change Operating Conditions

If you wish to change the operating conditions (Mode, Fan Speed, Thermostat Setting), after making the timer setting, wait until the entire display reappears, then press the appropriate buttons to change to the desired operating condition.

### To Cancel the Timer

Press the CANCEL TIMER button.

### To Change the Timer Settings

Press the ON TIMER button/OFF TIMER button as required. Perform Use TIMER step 2 and 3.

### To Stop Air Conditioner Operation while the Timer is Operating

Press the START/STOP button.

### To Change Operating Conditions

If you wish to change operating conditions (Mode, Fan Speed, Thermostat Setting), after making the timer setting wait until the entire display reappears, then press the appropriate buttons to change the operating condition desired.





# SLEEP TIMER OPERATION

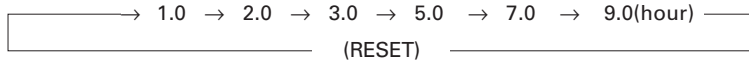
Unlike other timer functions, the SLEEP timer is used to set the length of time until air conditioner operate is stopped.

## To Use the SLEEP timer

**While the air conditioner is operating or stopped, press the SLEEP button (Fig. 6 ㉑).**

The SLEEPTIMER mark (  ) on the Remote Controller's display will light. Within 3 seconds after (  ) light the time can be changed by pressing SLEEP button once again.

Each time the button is pressed, the time changes in the following order:



About three seconds later, the entire display will reappear.

The Indoor Unit's OPERATION Indicator Lamp (red) (Fig. 3 ㉔) and theTIMER indicator lamp (green) (Fig. 3 ㉕) light.

## To Cancel the Timer:

Press the CANCEL TIMER button.

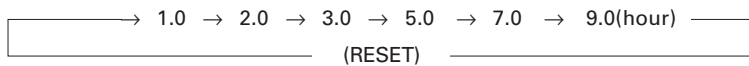
## To Stop the Air Conditioner During Timer Operation:

Press the START/STOP button.

## To Change the Timer Settings

**Press the SLEEP button once to display the last setting time. Press the SLEEP button again to change the time.**

Each time the button is pressed, the time changes in the following order (Change from the last setting time):



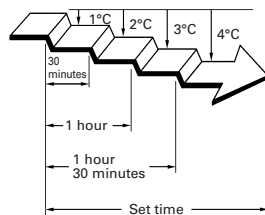
## About the SLEEP timer

To prevent excessive warming or cooling during sleep, the SLEEP timer function automatically modifies the thermostat setting in accordance with the time setting. When the time has elapsed, the air conditioner completely stops.

### During Heating operation:

When the SLEEP timer is set, the thermostat setting is automatically lowered 1°C every thirty minutes. When the thermostat has been lowered a total of 4°C, the thermostat setting at that time is maintained until the set time has elapsed, at which time the air conditioner automatically turns off.

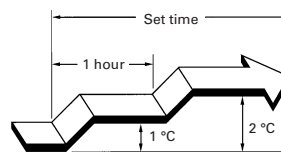
SLEEP timer setting



### During Cooling/Dry operation:

When the SLEEP timer is set, the thermostat setting is automatically raised 1 °C every sixty minutes. When the thermostat has been raised a total of 2 °C, the thermostat setting at that time is maintained until the set time has elapsed, at which time the air conditioner automatically turns off.

SLEEP timer setting



## Confirmation of TIMER's time

To confirm each TIMER's time, press SET button while setting OFFTIMER, ONTIMER or SLEEP TIMER (or during running). If SET button is pressed, it will be changed into time display from temperature setting display. The left time of the TIMER which is being set currently will be displayed for 5 seconds, then it will return to temperature setting display.



# ADJUSTING THE DIRECTION OF AIR CIRCULATION

Vertical (up-down) direction of airflow is adjusted by pressing the Remote Controller's AIR FLOW DIRECTION button. Horizontal (right-left) airflow direction is adjusted manually, by moving the Air Flow Direction Louvers.

Whenever making horizontal airflow adjustments, start air conditioner operation and be sure that the vertical air direction louvers are stopped.

## Vertical Air Direction Adjustment

Press the AIR FLOW DIRECTION button (Fig. 6 ⑳).

Each time the button is pressed, the air direction range will change as follows:

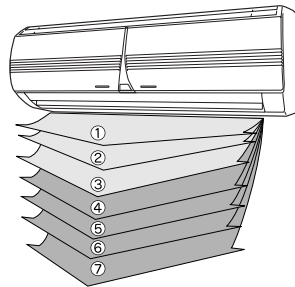


### Types of Air flow Direction Setting:

①,②,③ : During Cooling/Dry modes

④,⑤,⑥,⑦ : During Heating mode

The Remote Controller's display does not change.



- Use the air direction adjustments within the ranges shown above.
- The vertical airflow direction is set automatically as shown, in accordance with the type of operation selected.
  - During Cooling/Dry mode : Horizontal flow ①
  - During Heating mode : Downward flow ⑦
- During AUTO mode operation, for the first minute after beginning operation, airflow will be horizontal ①; the air direction cannot be adjusted during this period.

### ⚠ DANGER!

- Never place fingers or foreign objects inside the outlet ports, since the internal fan operates at high speed and could cause personal injury.

- Always use the Remote Controller's AIR FLOW DIRECTION button to adjust the vertical airflow louvers. Attempting to move them manually could result in improper operation; in this case, stop operation and restart. The louvers should begin to operate properly again.

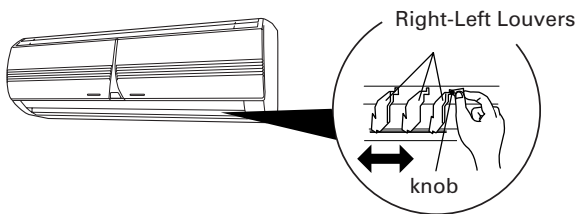
- During use of the Cooling and Dry modes, do not set the Air Flow Direction Louvers in the Heating range (④ - ⑦) for long periods of time, since water vapor may condense near the outlet louvers and drops of water may drip from the air conditioner. During the Cooling and Dry modes, if the Air Flow Direction Louvers are left in the heating range for more than 30 minutes, they will automatically return to position ③.

- When used in a room with infants, children, elderly or sick persons, the air direction and room temperature should be considered carefully when making settings.

## Right-Left Adjustment

Adjust the Right-Left louvers.

- Move the Right-Left louvers to adjust air flow in the direction you prefer.



### ⚠ DANGER!

- When adjusting the Right-Left Louvers, it is necessary to stop the Air-Conditioner first and make sure that it stops completely before adjusting the direction.



## SWING OPERATION

---

Begin air conditioner operation before performing this procedure.

### To select SWING Operation

**Press the SWING LOUVER button (Fig. 6 ⑳).**

The SWING indicator lamp (orange) (Fig. 3 ㉑) will light.

In this mode, the Air Flow Direction Louvers will swing automatically to direct the air flow both up and down.

### To Stop SWING Operation

**Press the SWING LOUVER button (Fig. 6 ㉑) once again.**

The SWING indicator lamp (orange) (Fig. 3 ㉑) will go out.

Airflow direction will return to the setting before swing was begun.

### About Swing Operation

During cooling/Dry mode : Swings between ① and ③.

During heating mode : Swings between ③ and ⑦.

- The range of swing is relative to the currently set airflow direction.
- The SWING operation may stop temporarily when the air conditioner's fan is not operating, or when operating at very low speeds.
- The airflow direction can not be adjusted during SWING operation even when the AIR FLOW DIRECTION button is pressed.

## MANUAL AUTO OPERATION

---

Use the MANUAL AUTO operation in the event the Remote Controller is lost or otherwise unavailable.

### How To Use the Main Unit Controls

**Press the MANUAL AUTO button (Fig. 2 ㉒) on the main unit control panel.**

To stop operation, press the MANUAL AUTO button once again.  
(Controls are located inside the Intake Grille)

- When the air conditioner is operated with the controls on the Main Unit, it will operate under the same mode as the AUTO mode selected on the Remote Controller (see page 6).
- The fan speed selected will be "AUTO" and the thermostat setting will be standard (24°C).

# CLEANING AND CARE

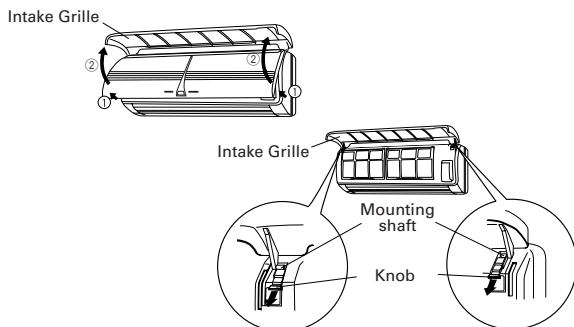
## CAUTION!

- Before cleaning the air conditioner, be sure to turn it off and disconnect the Power Supply Cord.
- Be sure the Intake Grille (Fig. 1 ③) is installed securely.
- When removing and replacing the air filters, be sure not to touch the heat exchanger, as personal injury may result.

### Cleaning the Intake Grille

#### 1. Remove the Intake Grille.

- ① Place your fingers at both lower ends of the grille panel, and lift forward; if the grille seems to catch partway through its movement, continue lifting upward to remove.
- ② Pull past the intermediate catch and open the Intake Grille wide so that it become horizontal.

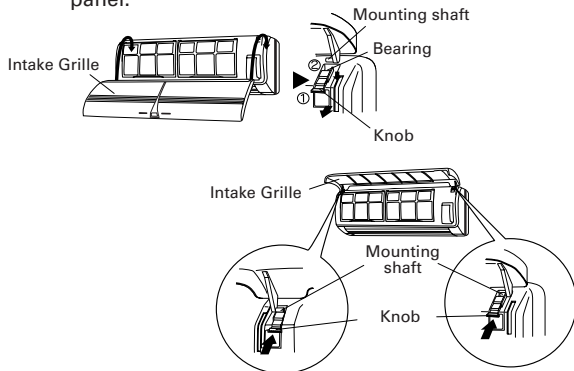


#### 2. Clean with water.

Remove dust with a vacuum cleaner; wipe the unit with warm water, then dry with a clean, soft cloth.

#### 3. Replace the Intake Grille.

- ① Pull the knobs all the way.
- ② Hold the grille horizontal and set the left and right mounting shafts into the bearings at the top of the panel.



### Cleaning the Air Filter

#### 1. Open the Intake Grille, and remove the air filter.

Lift up the air filter's handle, disconnect the two lower tabs, and pull out.

Air filter handle



Hooks (two places)

#### 2. Remove dust with a vacuum cleaner or by washing.

After washing, allow to dry thoroughly in a shaded place.

#### 3. Replace the Air Filter and close the Intake Grille.

- ① Align the sides of the Air Filter with the panel, and push in fully, making sure the two lower tabs are returned properly to their holes in the panel.



Hooks (two places)

- ② Close the Intake Grille.

(For purposes of example, the illustration shows the unit without Intake Grille installed.)

- Dust can be cleaned from the Air Filter either with a vacuum cleaner, or by washing the filter in a solution of mild detergent and warm water. If you wash the filter, be sure to allow it to dry thoroughly in a shady place before reinstalling.
- If dirt is allowed to accumulate on the Air Filter, air flow will be reduced, lowering operating efficiency and increasing noise.
- During periods of normal use, the Air Filters should be cleaned every two weeks.

### When using the optional Air Cleaning Filter

- Install the optional Air Cleaning Filter set (APS-03D) as instructed (installation instructions are furnished with the Air Cleaning Filter set).

- When used for extended periods, the unit may accumulate dirt inside, reducing its performance. We recommend that the unit be inspected regularly, in addition to your own cleaning and care. For more information, consult authorized service personnel.
- When cleaning the unit's body, do not use water hotter than 40 °C, harsh abrasive cleansers, or volatile agents like benzene or thinner.
- Do not expose the unit body to liquid insecticides or hairsprays.
- When shutting down the unit for one month or more, first allow the fan mode to operate continuously for about one-half day to allow internal parts to dry thoroughly.

# TROUBLESHOOTING

## **WARNING!**

In the event of a malfunction (burning smell, etc.), immediately stop operation, disconnect the Power Supply Plug, and consult authorized service personnel.  
 Merely turning off the unit's power switch will not completely disconnect the unit from the power source. Always be sure to disconnect the Power Supply Plug or turn off your circuit breaker to ensure that power is completely off.

Before requesting service, perform the following checks:

|                                                                                                                            | Symptom                                                                                                                                                          | Problem                                                                                                                                                                                                                                                                                                                                                                                                                                                                                   | See Page |
|----------------------------------------------------------------------------------------------------------------------------|------------------------------------------------------------------------------------------------------------------------------------------------------------------|-------------------------------------------------------------------------------------------------------------------------------------------------------------------------------------------------------------------------------------------------------------------------------------------------------------------------------------------------------------------------------------------------------------------------------------------------------------------------------------------|----------|
| NORMAL FUNCTION                                                                                                            | Doesn't operate immediately:                                                                                                                                     | <ul style="list-style-type: none"> <li>● If the unit is stopped and then immediately started again, the compressor will not operate for about 3 minutes, in order to prevent fuse blowouts.</li> <li>● Whenever the Power Supply Plug is disconnected and then re-connected to a power outlet, the protection circuit will operate for about 3 minutes, preventing unit operation during that period.</li> </ul>                                                                          | —        |
|                                                                                                                            | Noise is heard:                                                                                                                                                  | <ul style="list-style-type: none"> <li>● During operation and immediately after stopping the unit, the sound of water flowing in the air conditioner's piping may be heard. Also, noise may be particularly noticeable for about 2 to 3 minutes after starting operation (sound of coolant flowing).</li> <li>● During operation, a slight squeaking sound may be heard. This is the result of minute expansion and contraction of the front cover due to temperature changes.</li> </ul> | —        |
|                                                                                                                            |                                                                                                                                                                  | <ul style="list-style-type: none"> <li>● During Heating operation, a sizzling sound may be heard occasional. This sound is produced by the Automatic Defrosting operation.</li> </ul>                                                                                                                                                                                                                                                                                                     | 13       |
|                                                                                                                            | Smells:                                                                                                                                                          | <ul style="list-style-type: none"> <li>● Some smell may be emitted from the indoor unit. This smell is the result of room smells (furniture, tobacco, etc.) which have been taken into the air conditioner.</li> </ul>                                                                                                                                                                                                                                                                    | —        |
|                                                                                                                            | Mist or steam are emitted:                                                                                                                                       | <ul style="list-style-type: none"> <li>● During Cooling or Dry operation, a thin mist may be seen emitted from the indoor unit. This results from the sudden Cooling of room air by the air emitted from the air conditioner, resulting in condensation and misting.</li> </ul>                                                                                                                                                                                                           | —        |
|                                                                                                                            |                                                                                                                                                                  | <ul style="list-style-type: none"> <li>● During Heating operation, the outdoor unit's fan may stop, and steam may be seen rising from the unit. This is due to Automatic Defrosting operation.</li> </ul>                                                                                                                                                                                                                                                                                 | 13       |
|                                                                                                                            | Airflow is weak or stops:                                                                                                                                        | <ul style="list-style-type: none"> <li>● When Heating operation is started, fan speed is temporarily very low, to allow internal parts to warm up.</li> <li>● During Heating operation, if the room temperature rises above the thermostat setting, the outdoor unit will stop, and the indoor unit will operate at very low fan speed. If you wish to warm the room further, set the thermostat for a higher setting.</li> </ul>                                                         | —        |
|                                                                                                                            |                                                                                                                                                                  | <ul style="list-style-type: none"> <li>● During Heating operation, the unit will temporarily stop operation (between 7 and 15 minutes) as the Automatic Defrosting mode operates. During Automatic Defrosting operation, the OPERATION indicator lamp will flash.</li> </ul>                                                                                                                                                                                                              | 13       |
|                                                                                                                            |                                                                                                                                                                  | <ul style="list-style-type: none"> <li>● The fan may operate at very low speed during Dry operation or when the unit is monitoring the room's temperature.</li> </ul>                                                                                                                                                                                                                                                                                                                     | 5        |
|                                                                                                                            |                                                                                                                                                                  | <ul style="list-style-type: none"> <li>● During SUPER QUIET operation, the fan will operate at very low speed.</li> </ul>                                                                                                                                                                                                                                                                                                                                                                 | 5        |
| <ul style="list-style-type: none"> <li>● In the monitor AUTO operation, the fan will operate at very low speed.</li> </ul> |                                                                                                                                                                  | 5                                                                                                                                                                                                                                                                                                                                                                                                                                                                                         |          |
| Water is produced from the outdoor unit:                                                                                   | <ul style="list-style-type: none"> <li>● During Heating operation, water may be produced from the outdoor unit due to Automatic Defrosting operation.</li> </ul> | 13                                                                                                                                                                                                                                                                                                                                                                                                                                                                                        |          |



# TROUBLESHOOTING

|                                                                     | Symptom                                                                                                                                                           | Items to check                                                                                                                                                                                                                                                                                                                                                                                                                                                                                                                                         | See Page |
|---------------------------------------------------------------------|-------------------------------------------------------------------------------------------------------------------------------------------------------------------|--------------------------------------------------------------------------------------------------------------------------------------------------------------------------------------------------------------------------------------------------------------------------------------------------------------------------------------------------------------------------------------------------------------------------------------------------------------------------------------------------------------------------------------------------------|----------|
| CHECK ONCE MORE                                                     | Doesn't operate at all:                                                                                                                                           | <ul style="list-style-type: none"> <li>● Is the Power Supply Plug disconnected its outlet?</li> <li>● Has there been a power failure?</li> <li>● Has a fuse blown out, or a circuit breaker been tripped?</li> </ul>                                                                                                                                                                                                                                                                                                                                   | —        |
|                                                                     |                                                                                                                                                                   | <ul style="list-style-type: none"> <li>● Is the timer operating?</li> </ul>                                                                                                                                                                                                                                                                                                                                                                                                                                                                            | 7 - 8    |
|                                                                     | Poor Cooling performance:                                                                                                                                         | <ul style="list-style-type: none"> <li>● Is the air filter dirty?</li> <li>● Air the air conditioner's intake grille or outlet port blocked?</li> <li>● Did you adjust the room temperature settings (thermostat) correctly?</li> <li>● Is there a window or door open?</li> <li>● In the case of Cooling operation, is a window allowing bright sunlight to enter? (Close the curtains.)</li> <li>● In the case of Cooling operation, are there heating apparatus and computers inside the room, or are there too many people in the room?</li> </ul> | —        |
|                                                                     |                                                                                                                                                                   | <ul style="list-style-type: none"> <li>● Is the unit set for SUPER QUIET operation?</li> </ul>                                                                                                                                                                                                                                                                                                                                                                                                                                                         | 5        |
| The unit operates differently from the Remote Controller's setting: | <ul style="list-style-type: none"> <li>● Are the Remote Controller's batteries dead?</li> <li>● Are the Remote Controller's batteries loaded properly?</li> </ul> | 4                                                                                                                                                                                                                                                                                                                                                                                                                                                                                                                                                      |          |

If the problem persists after performing these checks, or if you notice burning smells, or the TIMER indicator Lamp (Fig. 3 ⑥) flashes, immediately stop operation, disconnect the Power Supply Plug (Fig. 1 ⑭), and consult authorized service personnel.

## OPERATING TIPS

### Operation and Performance

#### Heating Performance

- This air conditioner operates on the heat-pump principle, absorbing heat from outdoor air and transferring that heat indoors. As a result, the operating performance is reduced as outdoor air temperature drops. If you feel that insufficient heating performance is being produced, we recommend you use this air conditioner in conjunction with another kind of heating appliance.
- Heat-pump air conditioners heat your entire room by recirculating air throughout the room, with the result that some time may be required after first starting the air conditioner until the room is heated.

#### Microcomputer-controlled Automatic Defrosting

- When using the Heating mode under conditions of low outdoor temperature and high humidity, frost may form on the outdoor unit, resulting in reduced operating performance.

In order to prevent this kind of reduced performance, this unit is equipped with a Microcomputer-controlled Automatic Defrosting function. If frost forms, the air conditioner will temporarily stop, and the defrosting circuit will operate briefly (for about 7-15 minutes).

During Automatic Defrosting operation, the OPERATION indicator lamp (red) will flash.

### AUTO Restart

#### In Event of Power Interruption

- The air conditioner power has been interrupted by a power failure. The air conditioner will then restart automatically in its previous mode when the power is restored.
- Operated by setting before the power failure.
- If a power failure occurs during TIMER operation, the timer will be reset and the unit will begin (or stop) operation at the new time setting. In the event that this (kind of timer fault occurs the TIMER Indicator Lamp will flash (see Page. 3)).
- Use of other electrical appliances (electric shaver, etc.) or nearby use of a wireless radio transmitter may cause the air conditioner to malfunction. In this event, temporarily disconnect the Power Supply Plug, reconnect it, and then use the Remote Controller to resume operation.

## OPERATING TIPS

### Temperature and Humidity Range

|                     | Cooling Mode   | Dry Mode       | Heating Mode        |
|---------------------|----------------|----------------|---------------------|
| Outdoor temperature | About 21-43 °C | About 21-43 °C | About -5-24 °C      |
| Indoor temperature  | About 18-32 °C | About 18-32 °C | About 27 °C or less |

- If the air conditioner is used under higher temperature conditioner than those listed, the built-in protection circuit may operate to prevent internal circuit damage. Also, during Cooling and Dry modes, if the unit is used under conditions of lower temperature than those listed above, the heat-exchanger may freeze, leading to water leakage and other damage.
- Do not use this unit for any purposes other than the Cooling, Dehumidifying, and air-circulation of rooms in ordinary dwellings.
- If the unit is used for long periods under high-humidity conditions, condensation may form on the surface of the indoor unit, and drip onto the floor or other objects underneath. (About 80% or more)
- Acoustic Noise Information  
The maximum sound pressure level is less than 70 dB (A) for both indoor unit and outdoor unit. According to IEC 704-1 and ISO 3744.



|              |                                                                 |
|--------------|-----------------------------------------------------------------|
| <b>TYPE</b>  | HEAT & COOL MODEL (REVERSE CYCLE)                               |
| <b>TYP</b>   | FÜR HEIZEN UND KÜHLEN (Umkehrzyklus)                            |
| <b>TYPE</b>  | MODÈLE RÉVERSIBLE (CYCLE INVERSE)                               |
| <b>TIPO</b>  | MODELO DE REFRIGERACIÓN Y CAIEFACCÓN (INVERSIÓN DE CICLO)       |
| <b>TIPO</b>  | MODELO PER RISCALDAMENTO E RAFFREDDAMENTO (CICLO AD INVERSIONE) |
| <b>ΤΥΠΟΣ</b> | ΜΟΝΤΕΛΟ ΘΕΡΜΑΝΣΕΩΣ ΚΑΙ ΨΥΞΕΩΣ ( ΑΝΑ ΣΤΡΟΦΟΥ ΚΥΚΛΟΥ)             |

|                                |                |
|--------------------------------|----------------|
| <b>SPECIFICATIONS</b>          |                |
| <b>POWER SUPPLY</b> .....      | 230 V-50 Hz    |
| <b>COOLING</b>                 |                |
| CAPACITY .....                 | 2.9 kW         |
| INPUT POWER .....              | 0.84 kW        |
| CURRENT .....                  | 3.7 A          |
| ENERGY EFFICIENCY RATIO .....  | 3.45           |
| <b>HEATING</b>                 |                |
| CAPACITY .....                 | 3.05 kW        |
| INPUT POWER .....              | 0.75 kW        |
| CURRENT .....                  | 3.3 A          |
| <b>MAX. CURRENT</b>            |                |
| Cooling .....                  | 4.6 A          |
| Heating .....                  | 4.8 A          |
| <b>MAX. PRESSURE</b>           |                |
| SUCTION .....                  | 1,160 kPa      |
| DISCHARGE .....                | 4,120 kPa      |
| <b>REFRIGERANT</b> .....       | R410A 900 g    |
| <b>DIMENSIONS &amp; WEIGHT</b> |                |
| <b>INDOOR UNIT</b>             |                |
| Height/Width/Depth .....       | 257/790/205 mm |
| Weight .....                   | 9.0 kg (NET)   |
| <b>OUTDOOR UNIT</b>            |                |
| Height/Width/Depth .....       | 535/695/250 mm |
| Weight .....                   | 30 kg (NET)    |

|                                |                |
|--------------------------------|----------------|
| <b>TECHNISCHE DATEN</b>        |                |
| <b>STROMVERSORGUNG</b> .....   | 230 V-50 Hz    |
| <b>KÜHLBETRIEB</b>             |                |
| KÜHLEISTUNG .....              | 2,9 kW         |
| LEISTUNGS-AUFNAHME .....       | 0,84 kW        |
| NENNSTROM .....                | 3,7 A          |
| WIRKUNGSGRADZAHL .....         | 3,45           |
| <b>HEIZBETRIEB</b>             |                |
| HEIZLEISTUNG .....             | 3,05 kW        |
| LEISTUNGS-AUFNAHME .....       | 0,75 kW        |
| NENNSTROM .....                | 3,3 A          |
| <b>MAX. STROMSTÄRKE</b>        |                |
| Kühlbetrieb .....              | 4,6 A          |
| Heizbetrieb .....              | 4,8 A          |
| <b>HÖCHSTZULÄSSIGER DRUCK</b>  |                |
| ANSAUGEN .....                 | 1.160 kPa      |
| ABGABE .....                   | 4.120 kPa      |
| <b>KÄLTEMITTEL</b> .....       | R410A 900 g    |
| <b>ABMESSUNGEN UND GEWICHT</b> |                |
| <b>INNENGERÄT</b>              |                |
| Höhe/Breite/Tiefe .....        | 257/790/205 mm |
| Gewicht .....                  | 9,0 kg (netto) |
| <b>AUßENGERÄT</b>              |                |
| Höhe/Breite/Tiefe .....        | 535/695/250 mm |
| Gewicht .....                  | 30 kg (netto)  |
| ● Enthält ozonabbauenden FCKW. |                |

|                               |                |
|-------------------------------|----------------|
| <b>FICHE TECHNIQUE</b>        |                |
| <b>ALIMENTATION</b> .....     | 230 V-50 Hz    |
| <b>REFROIDISSEMENT</b>        |                |
| PUISSANCE FRIGORIFIQUE .....  | 2,9 kW         |
| PUISSANCE ABSORBÉE .....      | 0,84 kW        |
| INTENSITÉ .....               | 3,7 A          |
| EFFICACITÉ FRIGORIFIQUE ..... | 3,45           |
| <b>CHAUFFAGE</b>              |                |
| PUISSANCE FRIGORIFIQUE .....  | 3,05 kW        |
| PUISSANCE ABSORBÉE .....      | 0,75 kW        |
| INTENSITÉ .....               | 3,3 A          |
| <b>INTENSITÉ MAXIMALE</b>     |                |
| Refroidissement .....         | 4,6 A          |
| Chauffage .....               | 4,8 A          |
| <b>PRESSION MAXIMALE</b>      |                |
| ASPIRATION .....              | 1.160 kPa      |
| REFOULEMENT .....             | 4.120 kPa      |
| <b>RÉFRIGÉRANT</b> .....      | R410A 900 g    |
| <b>DIMENSIONS ET POIDS</b>    |                |
| <b>UNITÉ INTÉRIEURE</b>       |                |
| H/L/P .....                   | 257/790/205 mm |
| Poids .....                   | 9,0 kg (NET)   |
| <b>UNITÉ EXTÉRIEURE</b>       |                |
| H/L/P .....                   | 535/695/250 mm |
| Poids .....                   | 30 kg (NET)    |

|              |                                                                 |
|--------------|-----------------------------------------------------------------|
| <b>TYPE</b>  | HEAT & COOL MODEL (REVERSE CYCLE)                               |
| <b>TYP</b>   | FÜR HEIZEN UND KÜHLEN (Umkehrzyklus)                            |
| <b>TYPE</b>  | MODÈLE RÉVERSIBLE (CYCLE INVERSE)                               |
| <b>TIPO</b>  | MODELO DE REFRIGERACIÓN Y CAIEFACCÓN (INVERSIÓN DE CICLO)       |
| <b>TIPO</b>  | MODELO PER RISCALDAMENTO E RAFFREDDAMENTO (CICLO AD INVERSIONE) |
| <b>ΤΥΠΟΣ</b> | ΜΟΝΤΕΛΟ ΘΕΡΜΑΝΣΕΩΣ ΚΑΙ ΨΥΞΕΩΣ ( ΑΝΑ ΣΤΡΟΦΟΥ ΚΥΚΛΟΥ)             |

|                                |                |
|--------------------------------|----------------|
| <b>SPECIFICATIONS</b>          |                |
| <b>POWER SUPPLY</b> .....      | 230 V-50 Hz    |
| <b>COOLING</b>                 |                |
| CAPACITY .....                 | 3.70 kW        |
| INPUT POWER .....              | 1.13 kW        |
| CURRENT .....                  | 5.0 A          |
| ENERGY EFFICIENCY RATIO .....  | 3.27           |
| <b>HEATING</b>                 |                |
| CAPACITY .....                 | 4.00 kW        |
| INPUT POWER .....              | 1.04 kW        |
| CURRENT .....                  | 4.6 A          |
| <b>MAX. CURRENT</b>            |                |
| Cooling .....                  | 6.1 A          |
| Heating .....                  | 6.5 A          |
| <b>MAX. PRESSURE</b>           |                |
| SUCTION .....                  | 1,160 kPa      |
| DISCHARGE .....                | 4,120 kPa      |
| <b>REFRIGERANT</b> .....       | R410A 970 g    |
| <b>DIMENSIONS &amp; WEIGHT</b> |                |
| <b>INDOOR UNIT</b>             |                |
| Height/Width/Depth .....       | 257/790/205 mm |
| Weight .....                   | 9.0 kg (NET)   |
| <b>OUTDOOR UNIT</b>            |                |
| Height/Width/Depth .....       | 535/780/250 mm |
| Weight .....                   | 35 kg (NET)    |

|                                |                |
|--------------------------------|----------------|
| <b>TECHNISCHE DATEN</b>        |                |
| <b>STROMVERSORGUNG</b> .....   | 230 V-50 Hz    |
| <b>KÜHLBETRIEB</b>             |                |
| KÜHLEISTUNG .....              | 3,70 kW        |
| LEISTUNGS-AUFNAHME .....       | 1,13 kW        |
| NENNSTROM .....                | 5,0 A          |
| WIRKUNGSGRADZAHL .....         | 3,27           |
| <b>HEIZBETRIEB</b>             |                |
| HEIZLEISTUNG .....             | 4,00 kW        |
| LEISTUNGS-AUFNAHME .....       | 1,04 kW        |
| NENNSTROM .....                | 4,6 A          |
| <b>MAX. STROMSTÄRKE</b>        |                |
| Kühlbetrieb .....              | 6,1 A          |
| Heizbetrieb .....              | 6,5 A          |
| <b>HÖCHSTZULÄSSIGER DRUCK</b>  |                |
| ANSAUGEN .....                 | 1.160 kPa      |
| ABGABE .....                   | 4.120 kPa      |
| <b>KÄLTEMITTEL</b> .....       | R410A 970 g    |
| <b>ABMESSUNGEN UND GEWICHT</b> |                |
| <b>INNENGERÄT</b>              |                |
| Höhe/Breite/Tiefe .....        | 257/790/205 mm |
| Gewicht .....                  | 9,0 kg (netto) |
| <b>AUßENGERÄT</b>              |                |
| Höhe/Breite/Tiefe .....        | 535/780/250 mm |
| Gewicht .....                  | 35 kg (netto)  |
| ● Enthält ozonabbauenden FCKW. |                |

|                               |                |
|-------------------------------|----------------|
| <b>FICHE TECHNIQUE</b>        |                |
| <b>ALIMENTATION</b> .....     | 230 V-50 Hz    |
| <b>REFROIDISSEMENT</b>        |                |
| PUISSANCE FRIGORIFIQUE .....  | 3,70 kW        |
| PUISSANCE ABSORBÉE .....      | 1,13 kW        |
| INTENSITÉ .....               | 5,0 A          |
| EFFICACITÉ FRIGORIFIQUE ..... | 3,27           |
| <b>CHAUFFAGE</b>              |                |
| PUISSANCE FRIGORIFIQUE .....  | 4,00 kW        |
| PUISSANCE ABSORBÉE .....      | 1,04 kW        |
| INTENSITÉ .....               | 4,6 A          |
| <b>INTENSITÉ MAXIMALE</b>     |                |
| Refroidissement .....         | 6,1 A          |
| Chauffage .....               | 6,5 A          |
| <b>PRESSION MAXIMALE</b>      |                |
| ASPIRATION .....              | 1.160 kPa      |
| REFOULEMENT .....             | 4.120 kPa      |
| <b>RÉFRIGÉRANT</b> .....      | R410A 970 g    |
| <b>DIMENSIONS ET POIDS</b>    |                |
| <b>UNITÉ INTÉRIEURE</b>       |                |
| H/L/P .....                   | 257/790/205 mm |
| Poids .....                   | 9,0 kg (NET)   |
| <b>UNITÉ EXTÉRIEURE</b>       |                |
| H/L/P .....                   | 535/780/250 mm |
| Poids .....                   | 35 kg (NET)    |