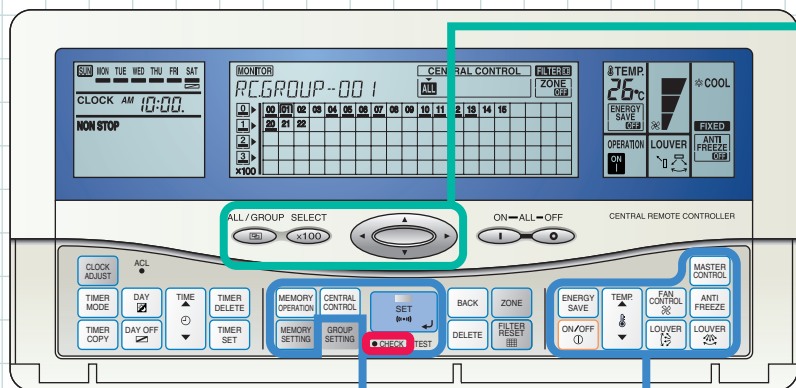
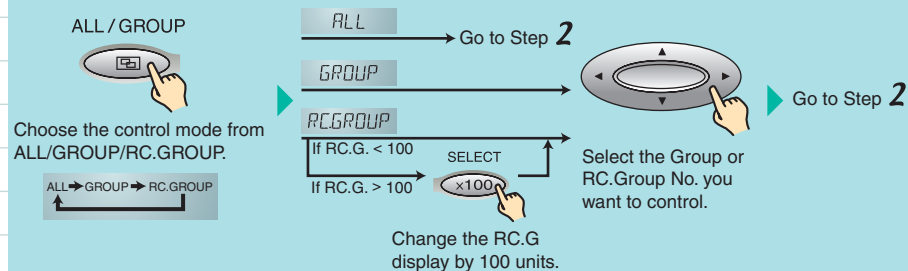


Switching indoor units ON/OFF and setting the operation mode

*Keep this guide close to the Central Remote Controller where everyone will see it.



1 Preparatory operation (Select the object of control)



You must continue to Step 2 after performing Step 1 "Preparatory operation."

2

Switch indoor units ON/OFF individually



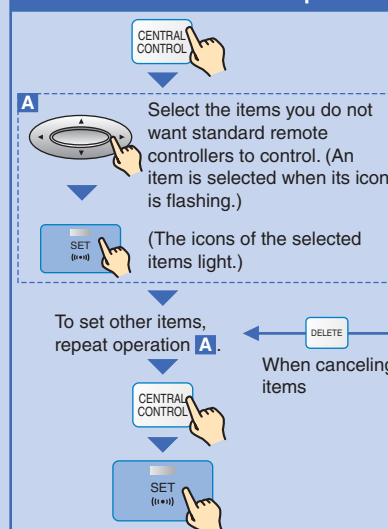
If you want to switch all indoor units ON or OFF together, you can skip Step 1.

Press ON-ALL-OFF instead.

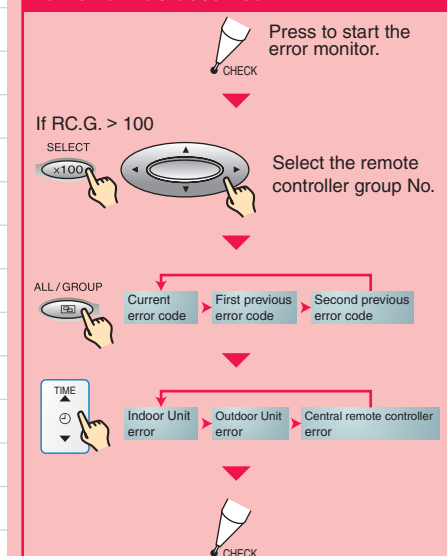
Set the operation mode

- MASTER CONTROL** * The modes available vary depending on the model.
- CENTRAL CONTROL**
- LOUVER** * To set the swing setting, press for 2 seconds. (Cancel the setting by pressing for 2 seconds again.)
- LOUVER** * To set the swing setting, press for 2 seconds. (Cancel the setting by pressing for 2 seconds again.)
- TEMP.**
- ANTI FREEZE** * Cancel ANTI FREEZE by pressing ANTI FREEZE again.
- ENERGY SAVE** * Cancel ENERGY SAVE by pressing ENERGY SAVE again.

Select the prohibit settings for the standard remote controller operation

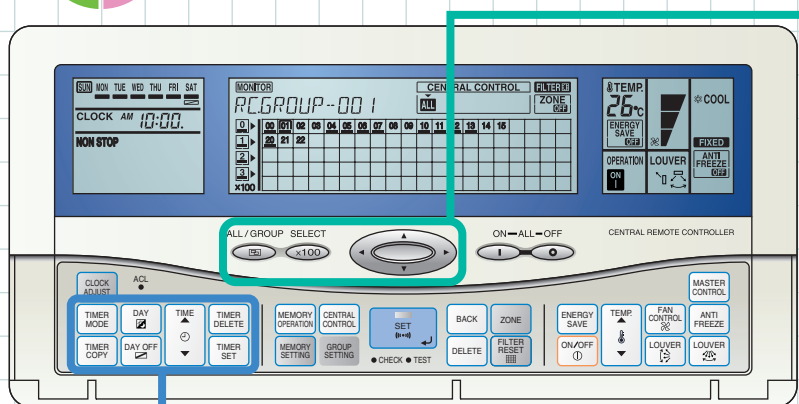


If an error has occurred...



Setting the Weekly Timer

*Keep this guide close to the Central Remote Controller where everyone will see it.



1 Preparatory operation

(Select the object of control → Select Weekly Timer)

ALL / GROUP → ALL → GROUP → RC.GROUP

Choose the control mode from ALL/GROUP/RC.GROUP.

If RC.G. < 100 → SELECT → ×100 → RC.GROUP

If RC.G. > 100 → ×100 → RC.GROUP

Change the RC.G display by 100 units.

Select the Group or RC.Group No. you want to control.

TIMER MODE → Select TIMER WEEKLY → PiPi → TIMER SET → Press for 2 seconds. → Go to Step 2

2 You must continue to Step 2 after performing Step 1 "Preparatory operation."

Set the Weekly Timer (Timer Copy function)

A Select the day that you want to set the timer. (1 starts flashing)

TEMP Adjust the "WEEKLY1" on time.

TIMER SET (OFF time starts flashing)

TEMP Adjust the "WEEKLY1" off time.

TIMER SET (ON time starts flashing)

TIMER SET (2 starts flashing)

To continue → **TIMER SET**

Return to the "WEEKLY 1" time display.

Repeat operation **A**.

To set "WEEKLY 2"

B **TIMER COPY**

The day, with the settings to be copied, and the cursor start flashing.

To set other days, repeat operation **B**.

DAY Move the cursor and select the day to paste the settings.

TIMER COPY

To set other days, repeat operation **B**.

TIMER SET (PiPi)

Press for 2 seconds. (The cursor returns to the current day.)

SET (i+*)

Cancel the Weekly Timer

DAY Select the day that you want to cancel the timer setting. (1 starts flashing)

TIMER DELETE

(--:-- is displayed after the time is canceled.)

TIMER SET (PiPi)

Press for 2 seconds.

SET (i+*)

Change content of the Weekly Timer setting

A **DAY** Select the day that you want to change the timer setting. (1 starts flashing)

TIMER SET Select the times.

TEMP Change the time setting.

TIMER SET

To change the setting of another day, repeat operation **A**.

TIMER SET (PiPi)

Press for 2 seconds.

SET (i+*)

Set a Day Off

DAY Select the day that you want to set as the DAY OFF.

DAY OFF

TIMER SET (PiPi)

Press for 2 seconds.

SET (i+*)